

StealthNet

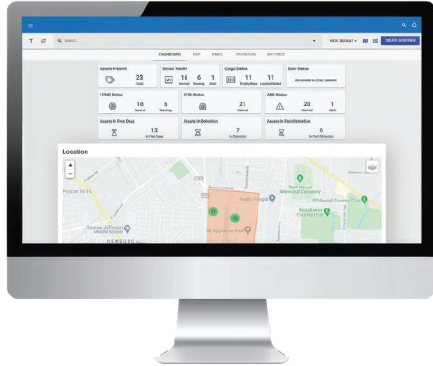
4G LTE Asset Tracking Gateway

Installs in less than 10 minutes!



Monarch Trackings's best in class hardware with robust platform provides real-time tracking, analysis, and insights.

Ideal for trailers and chassis. StealthNet is an easily expandable tracking solution designed for the toughest trucking conditions.



Improve driver uptime and overall ROI with a complete view into your fleet.



StealthNet Gateway



StealthNet Installed on Chassis

SOLUTION HIGHLIGHTS

- Real-time visibility and simple geofencing
- Automated alerts configurable in the Phillips Connect User Interface
- Bluetooth enabled - Easily add compatible sensors as they become available
- 6-9+ months of reporting (when battery is fully charged and asset is stationary)
- Flawless operation in the harshest temperatures
- 5-minute reporting when in motion
- 2 reports per day when parked

POWERFUL COST SAVING TOOLS

- Do more with fewer trailers
- Optimize trailer pool management
- Automate yard checks
- Covert installations help eliminate trailer theft and cargo loss
- Improve driver satisfaction
- Manage detention billing



Theft Recovery



GPS, Geofencing, Route Tracking



Unlimited Bluetooth Connectivity



10 Minute Installation

956-489-3100
www.monarchtracking.com



StealthNet



CELLULAR TECHNOLOGY

LTE Cat 1
Integrated high sensitivity antenna
Auto register to packet network

GPS FUNCTIONALITY

Channels: 56
Tracking Sensitivity: -162 dBm
Acquisition Sensitivity: -148 dBm
Location Accuracy: 2.5 CEP

BLUETOOTH

Low Energy (BLE)
Version 4.2

POWER MANAGEMENT

Battery Type: 4 x 18650 Li-ion
Battery Capacity: 36Wh (10.6 Ah)
Expected Battery Life: 10 Years
Deep Sleep: < 400uW
Energy Per Report: < 8mWh
Tracking: < 8mW

ELECTRICAL

Operating Voltage: 10V – 32VDC
Power management modes: Full power, network off, listening mode, deep sleep

ENVIRONMENTAL

Operation Temperature: -22°F to 167°F (-30°C to 75°C)
Storage Temperature: -40°F to 167°F (-40°C to 75°C)
Operation Humidity: 20% to 90% (non-condensing)
Storage Humidity: 10% to 95% (non-condensing)
Designed to meet SAE J1455, SAE 113, and J121

PHYSICAL

Dimensions: 8.14x3.13x1.69
Weight: 0.93lbs (420g)
Internal Cellular and GPS Antenna

APPROVALS

FCC 47 CFR Part 15, Part 22, and Part 24

956-489-3100
www.monarchtracking.com

